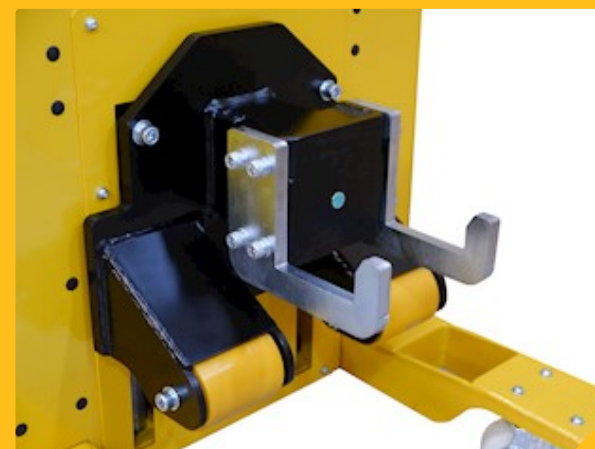


MH400+ | AC motor | Mild steel |



Features & Benefits

MH400+ | AC motor | Mild steel |



MH400+ | AC motor | Mild steel | Hydraulic

MHandler

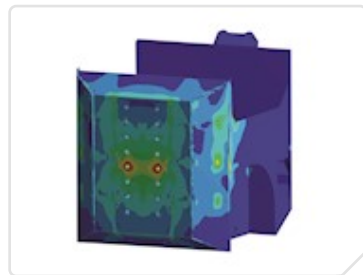
MH400+

Battery



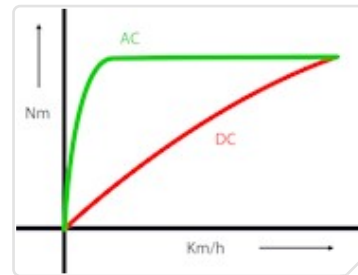
- Maintenance-free

Strong



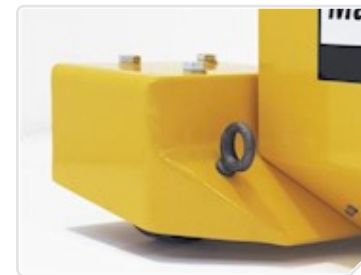
- FEA tested steel chassis

Powerful



- Up to 4,000 kg load capacity

Safety



- Anti-crush button
- Automatic tiller cut off
- Emergency stop button

Traction



- Internal weight packs

Technical data

MH400+ | AC motor | Mild steel | Hydraulic

Identification

Recommended load weight- Castors	4000 kg
Recommended load weight- Rails	12000 kg
Machine weight not including battery	185 kg
Drive type	Electric AC
Drive motor power	2.0 kW
Drive wheel type	Polyurethane
Parking brake	Electromagnetic
Variable machine speed	0.1 km/h - 5 km/h

Charging option

Charger - external - 10A 24V - 110V-240V
Charger - external - 15A 24V - 85V-265V

Optional extras

Option - flashing safety light and motion bleeper
Option - two speed selector switch

Male coupling

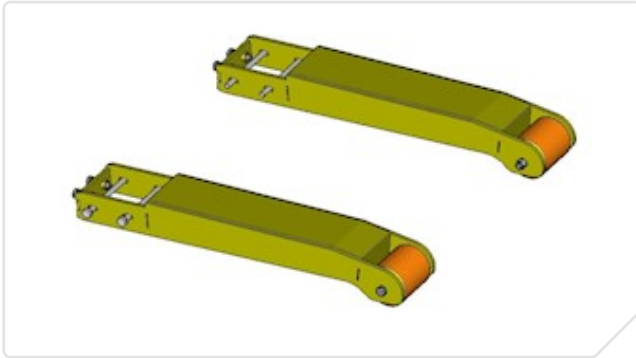
MH3 - support legs

Coupling options

MH400+ | AC motor | Mild steel |

Z16-00600

MH3 - support legs



Machine options

MHandler

Z16-00500

Option - flashing safety light and motion bleeper



Z16-00503

Option - two speed selector switch



Find out **more**

Contact us today to find out which electric tug from MasterMover can help to improve efficiency and safety in your workplace.

For sales and support please contact:

SELS s.r.o.

K AMP 2025/2b
66434, Kuřim, Czech Republic

T +420 721 187 768

E petr.cermak@smartsels.com

W www.smartsels.com