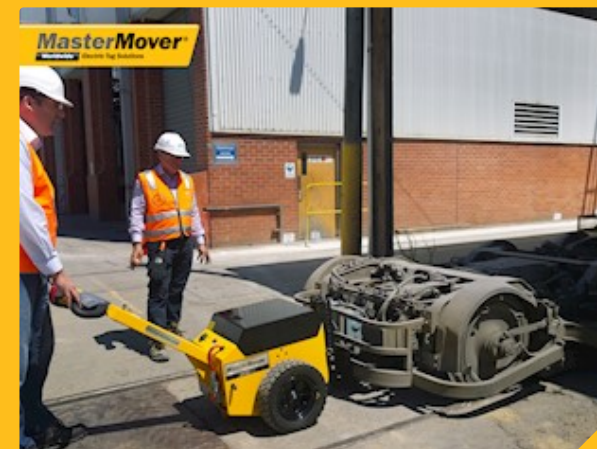


## MP400



# Features & Benefits

## AT Pusher MP400



MP400

### AT Pusher

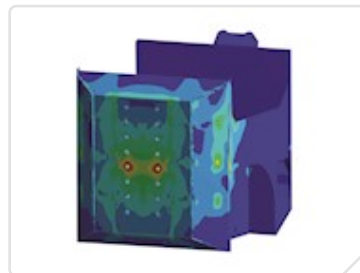
The MasterPusher MP400 is designed to push loads on rails.

#### Battery



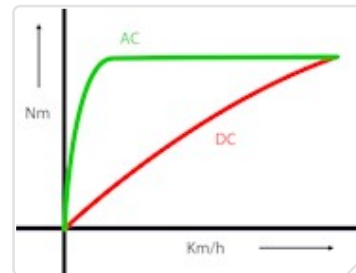
- Interchangeable batteries
- Maintenance-free
- Battery monitoring system

#### Strong



- FEA tested steel chassis
- Impact resistant headset
- Steel couplings

#### Powerful



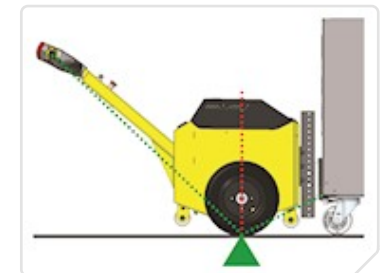
- AC drive motor
- Up to 80,000 kg rails load capacity
- High-torque gearbox

#### Safety



- Emergency stop button
- Automatic braking system
- Two speed selector switch

#### Traction



- Leveraged weight transfer
- Controlled start acceleration
- Industrial pneumatic drive wheels

# Technical data

## AT Pusher MP400

### Identification

Recommended load weight- Rails	80000 kg
Machine weight including battery	214 kg
Drive type	Electric AC
Drive motor power	2.0 kW
Drive wheel type	Rubber - pneumatic
Parking brake	Electromagnetic
Standard machine speed	2 km/h
IP rating for the machine	IP44

### Battery options

Battery pack - sealed - 119Ah 24V - interchangeable

### Charging option

Charger - external - 15A 24V - 85V-265V

### Optional extras

Option - flashing safety light and motion bleeper

Option - two speed selector switch

### Male coupling

Coupling - male - height adjustable box
Coupling - height adjustable push plate - 90° (L shaped)
Coupling - height adjustable push plate
Coupling - York
Coupling - Tetra
Coupling - push plate - roller

### Female coupling

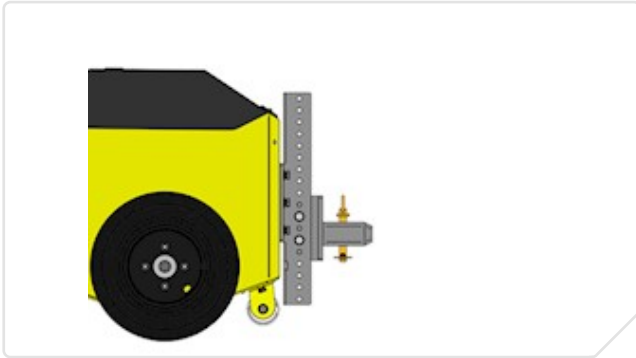
Coupling - female - box
-------------------------

# Coupling options

## AT Pusher MP400

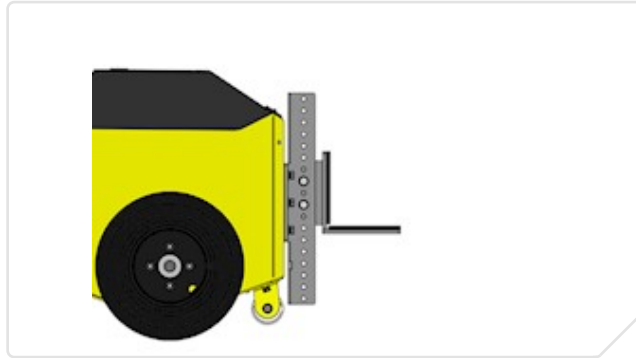
Z42-00600

Coupling - male - height adjustable box



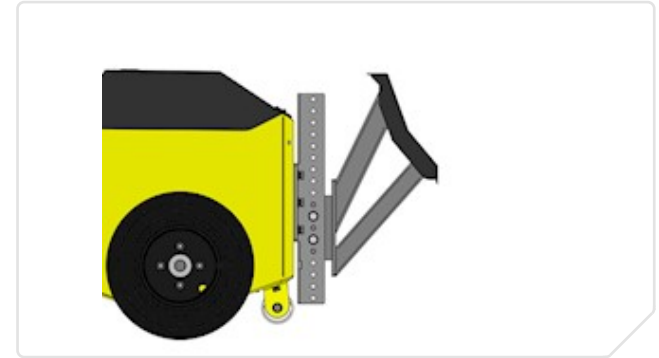
Z42-00601

Coupling - height adjustable push plate - 90° (L sha...



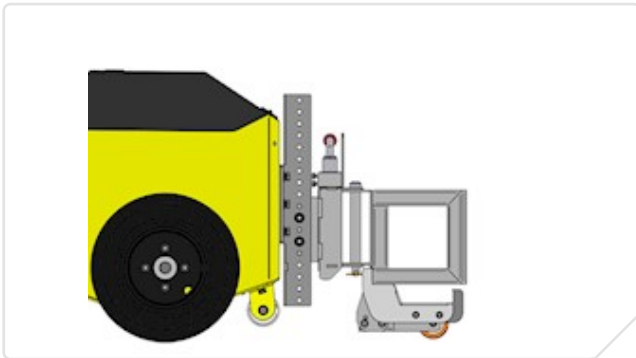
Z42-00602

Coupling - height adjustable push plate



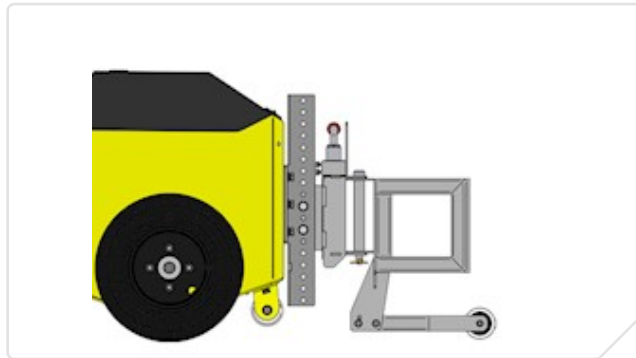
Z42-00603

Coupling - York



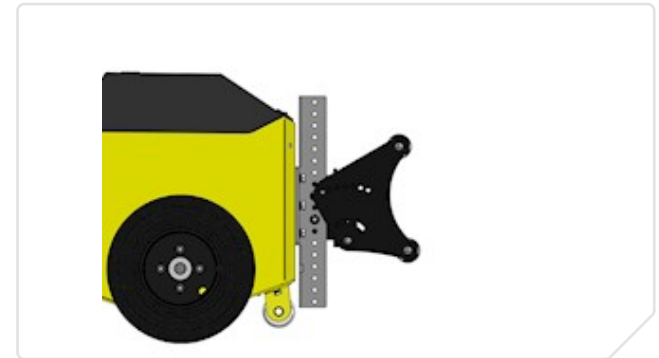
Z42-00604

Coupling - Tetra



Z42-00605

Coupling - push plate - roller



# Machine options

## AT Pusher

Z40-00500

Option - wireless control handset



Z41-00501

Option - flashing safety light and motion bleeper



Z40-00502

Option - wheel protectors



Z40-00505

Option - two speed selector switch



Z42-00500

Option - flashing safety light and motion bleeper



Z42-00501

Option - two speed selector switch



# *Find out* **more**

Contact us today to find out which electric tug from MasterMover can help to improve efficiency and safety in your workplace.

For sales and support please contact:

**SELS s.r.o.**

K AMP 2025/2b  
66434, Kuřim, Czech Republic

**T** +420 721 187 768

**E** petr.cermak@smartsels.com

**W** www.smartsels.com