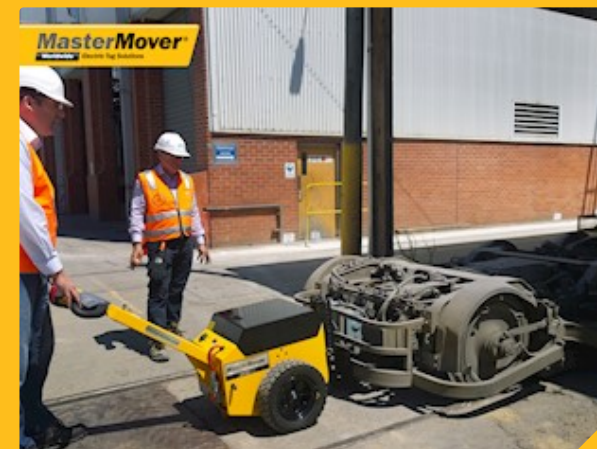


ATP400



Features & Benefits

AT Pusher ATP400



ATP400

AT Pusher

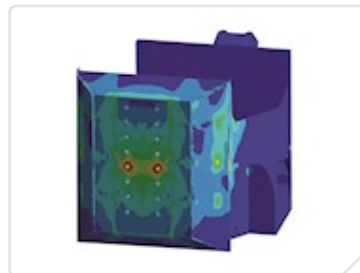
ATP400 is designed to push wheeled loads, even if the floor surface is less than perfect.

Battery



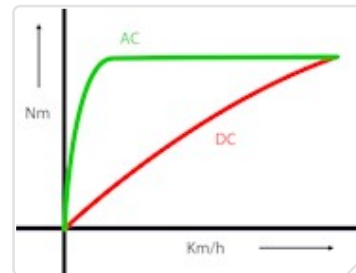
- Interchangeable batteries
- Maintenance-free
- Battery monitoring system

Strong



- FEA tested steel chassis
- Impact resistant headset
- Steel couplings

Powerful



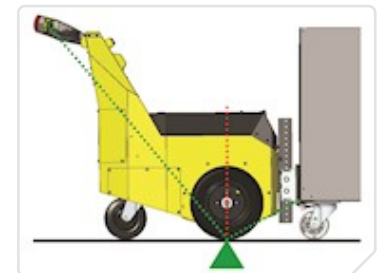
- AC drive motor
- Up to 80,000 kg rails load capacity
- High-torque gearbox

Safety



- Self-levelling support castor
- Two speed selector switch
- Emergency stop button

Traction



- Leveraged weight transfer
- Controlled start acceleration
- industrial pneumatic drive wheels

Technical data

AT Pusher ATP400

Identification

Recommended load weight- Castors	5000 kg
Recommended load weight- Rails	80000 kg
Machine weight including battery	350 kg
Drive type	Electric AC
Drive wheel type	Rubber - pneumatic
Parking brake	Electromagnetic
Standard machine speed	2 km/h
IP rating for the machine	IP44

Battery options

- Battery pack - sealed - 102Ah 24V - interchangeable
- Battery pack - sealed - 119Ah 24V- interchangeable

Charging option

- Charger - external - 15A 24V - 85V-265V

Optional extras

- Option - wireless control handset
- Option - flashing safety light and motion bleeper
- Option - wheel protectors
- Option - two speed selector switch

Male coupling

- Coupling - male - height adjustable box
- Coupling - height adjustable push plate - 90° (L shaped)
- Coupling - height adjustable push plate
- Coupling - York
- Coupling - Tetra

Female coupling

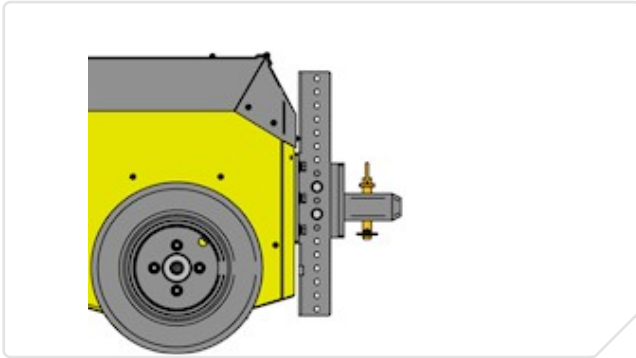
- Coupling - female - box

Coupling options

AT Pusher ATP400

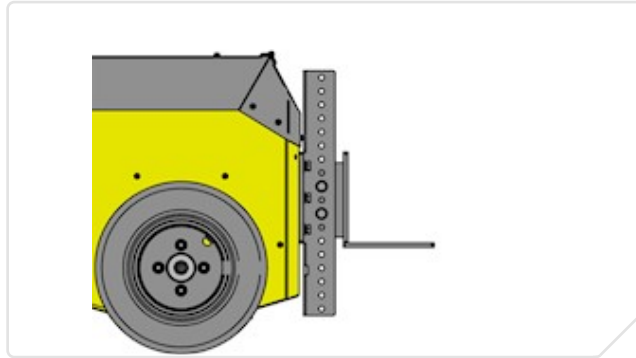
Z40-00601

Coupling - male - height adjustable box



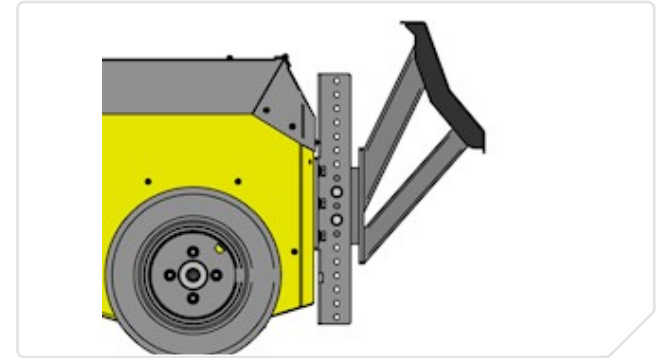
Z40-00602

Coupling - height adjustable push plate - 90° (L sha...



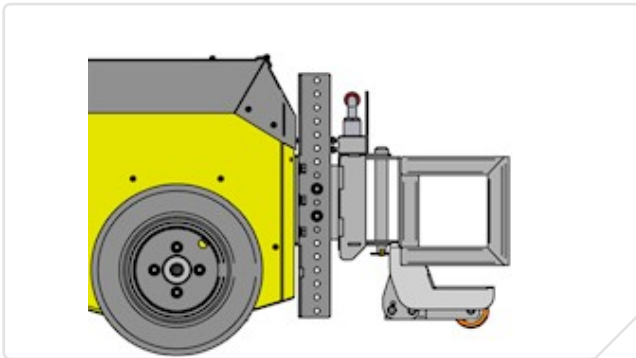
Z40-00603

Coupling - height adjustable push plate



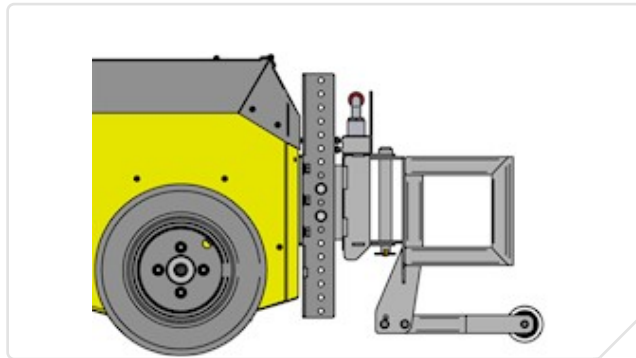
Z40-00604

Coupling - York



Z40-00605

Coupling - Tetra



Z40-00701

Coupling - female - box



Machine options

AT Pusher

Z40-00500

Option - wireless control handset



Z41-00501

Option - flashing safety light and motion bleeper



Z40-00502

Option - wheel protectors



Z40-00505

Option - two speed selector switch



Z42-00500

Option - flashing safety light and motion bleeper



Z42-00501

Option - two speed selector switch



Find out **more**

Contact us today to find out which electric tug from MasterMover can help to improve efficiency and safety in your workplace.

For sales and support please contact:

SELS s.r.o.

K AMP 2025/2b
66434, Kuřim, Czech Republic

T +420 721 187 768

E petr.cermak@smartsels.com

W www.smartsels.com